

# PRELIMINARY PLANS

NOT APPROVED FOR CONSTRUCTION

## The Fairmont



*Elevation I (with brick)*



*Elevation II*



*Elevation III*



*Elevation I*



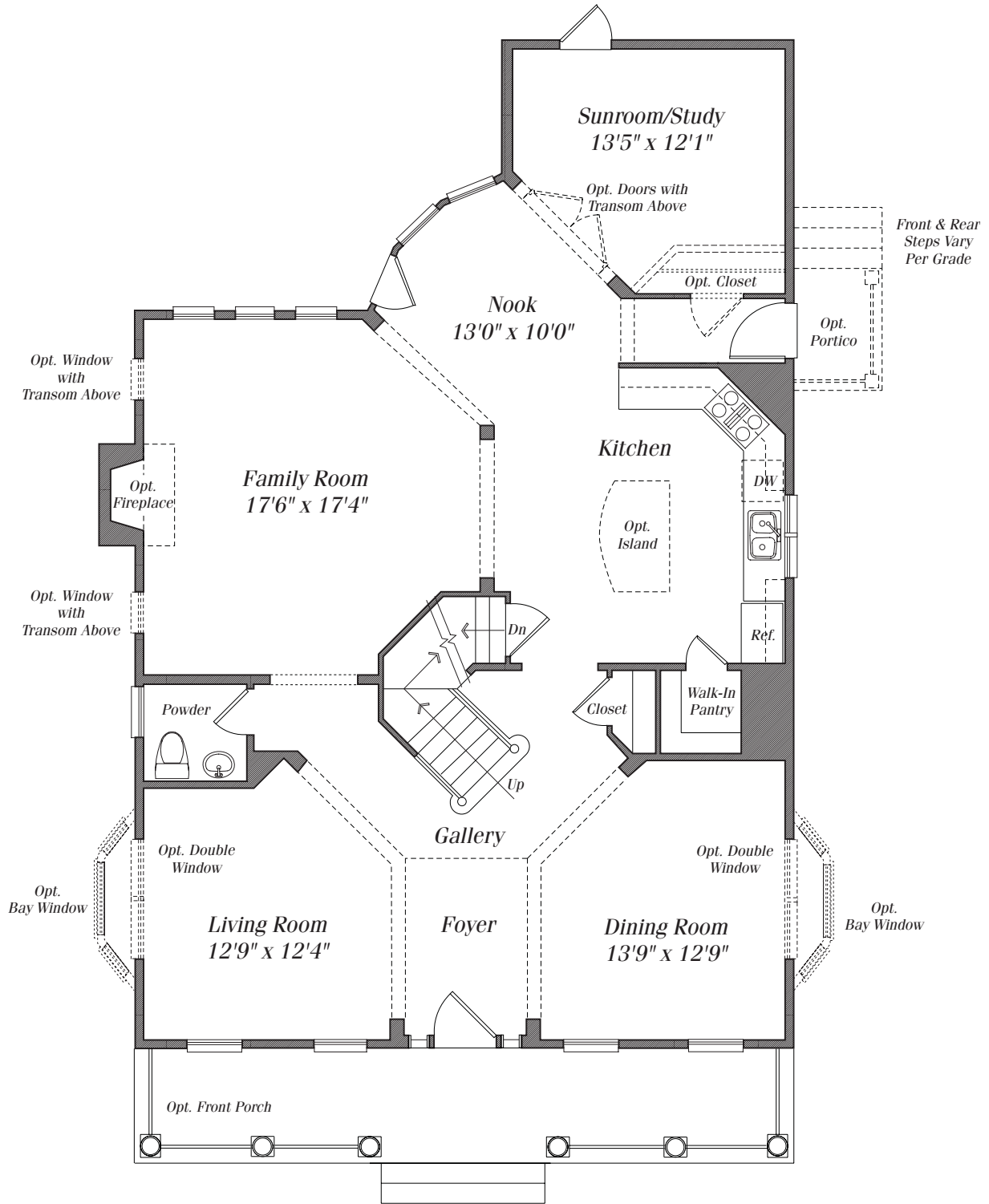
**MICHAEL HARRIS HOMES**

—◆—  
Classic American Homes & Estates

*Rendering of homes is an artist's conception which may show optional features and are not part of any sales contract. Features, materials, dimensions and designs are subject to errors, omissions and change at any time without prior notice.*

C/L/V

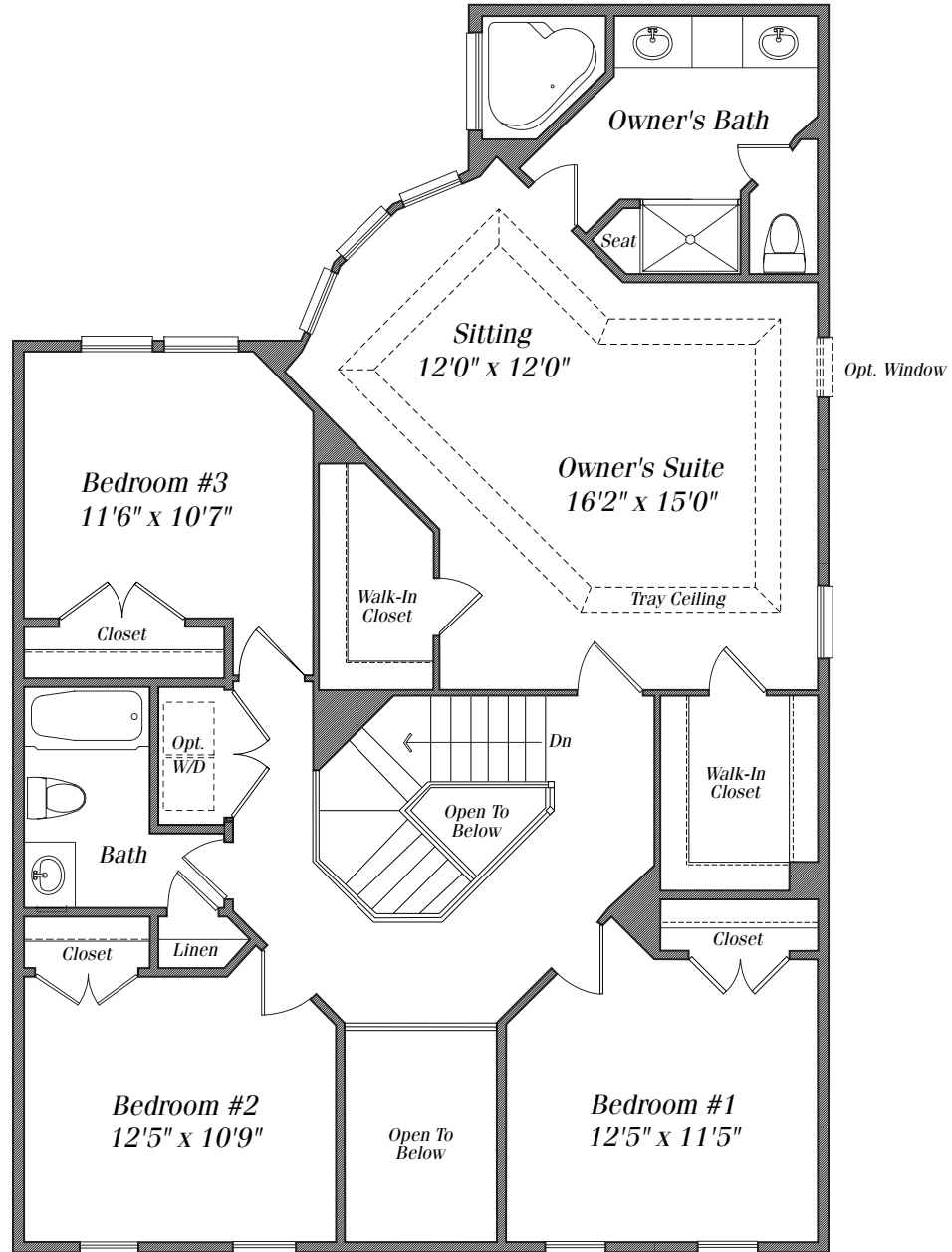
# Main Level



All sizes and dimensions are approximate. Features, materials, dimensions and designs are subject to errors, omissions and change without notice. Floorplans and elevations are an artist's conception which may show optional features and are not part of any sales contract.

C/L/V

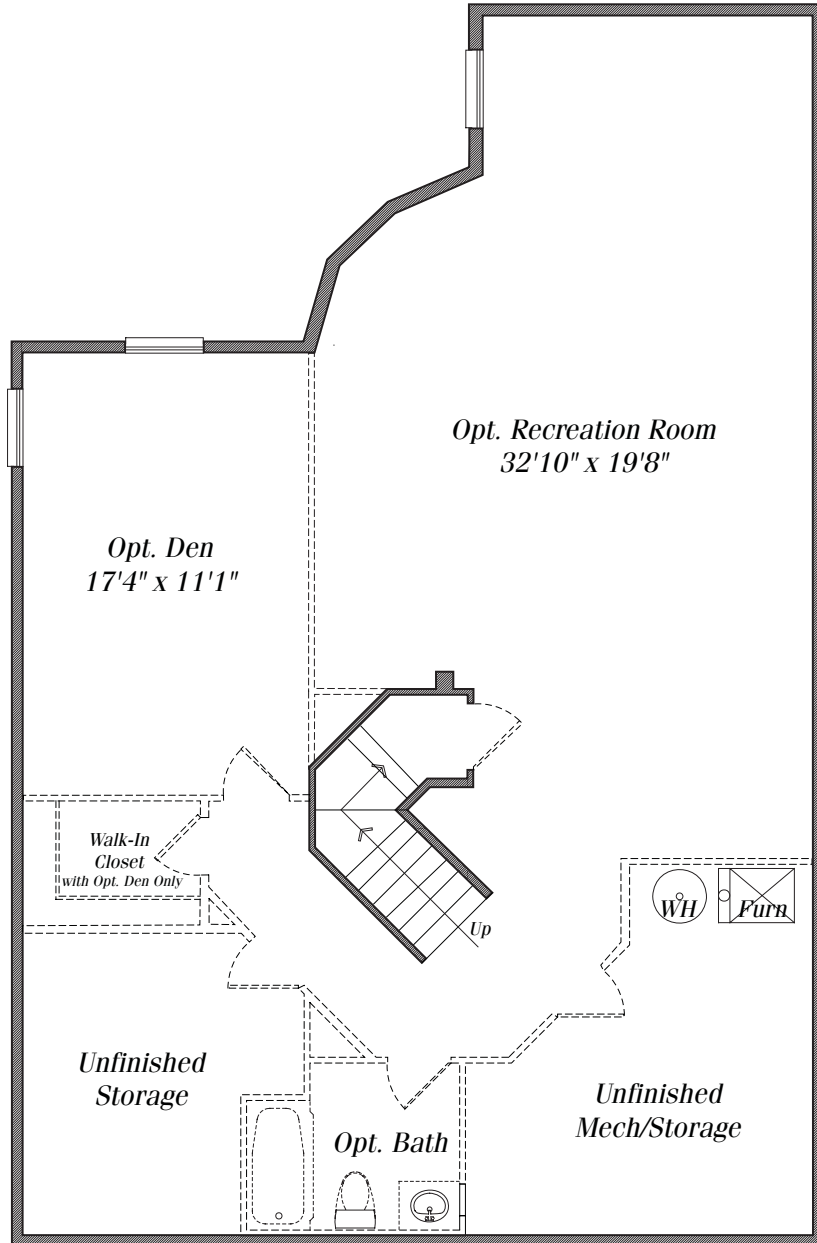
# Second Floor



All sizes and dimensions are approximate. Features, materials, dimensions and designs are subject to errors, omissions and change without notice. Floorplans and elevations are an artist's conception which may show optional features and are not part of any sales contract.

C/L/V

# Lower Level



*All sizes and dimensions are approximate. Features, materials, dimensions and designs are subject to errors, omissions and change without notice. Floorplans and elevations are an artist's conception which may show optional features and are not part of any sales contract.*



**MICHAEL HARRIS HOMES**

Classic American Homes & Estates

8605 Westwood Center Drive, Suite 210 • Vienna, VA 22182



C/L/V

The Fairmont