

# THE SAGAMORE



ELEVATION 2



ELEVATION 1



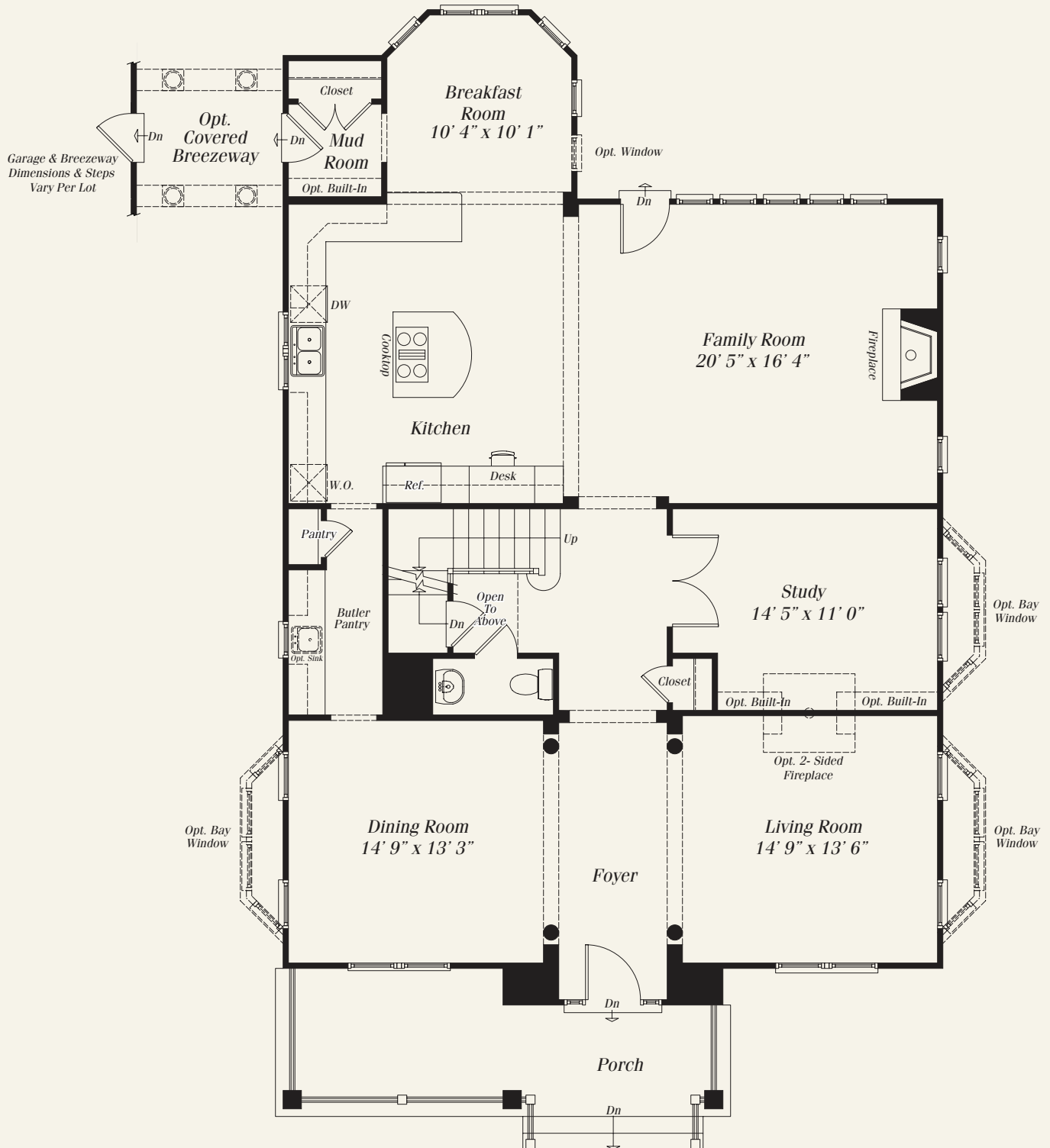
ELEVATION 3

Stately and refined, The Sagamore has the regal bearing of a wealthy industrialist's home from the mid 1800's. Outside, The Sagamore makes a statement of presence and power, while inside, its formal floorplan and traditional lines marry the refinement of the Gilded Age with the openness and light of the modern age. Formal living and dining rooms complement 21<sup>st</sup> century spaces, such as a gourmet kitchen that opens to a generous family room and the shared study nestled between two upstairs bedrooms.

CHESTNUT LODGE

# THE SAGAMORE

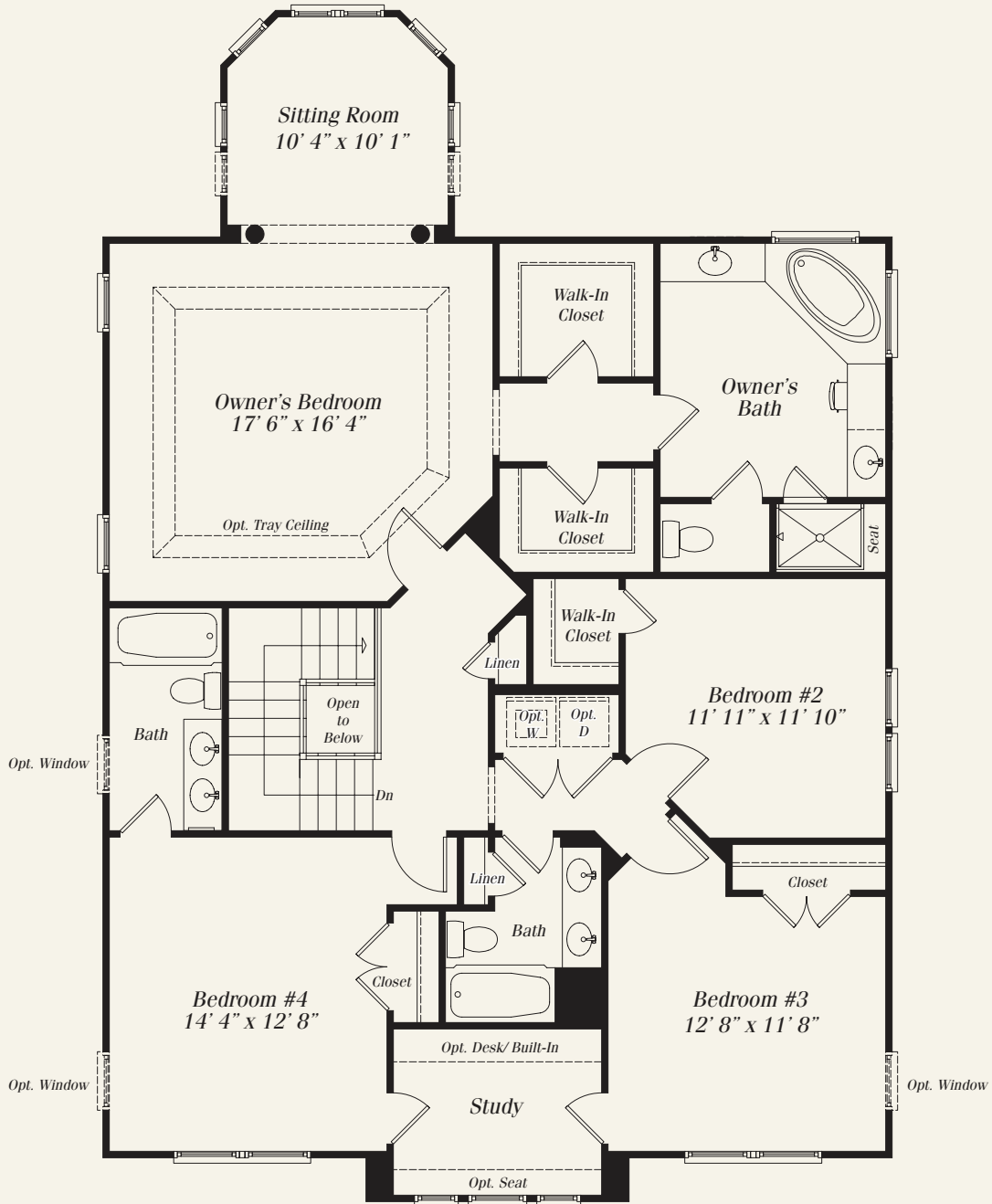
## MAIN LEVEL



All sizes and dimensions are approximate. Features, materials, dimensions and designs are subject to errors, omissions and change without notice. Floorplans and elevations are an artist's conception which may show optional features and are not part of any sales contract. 1/2011

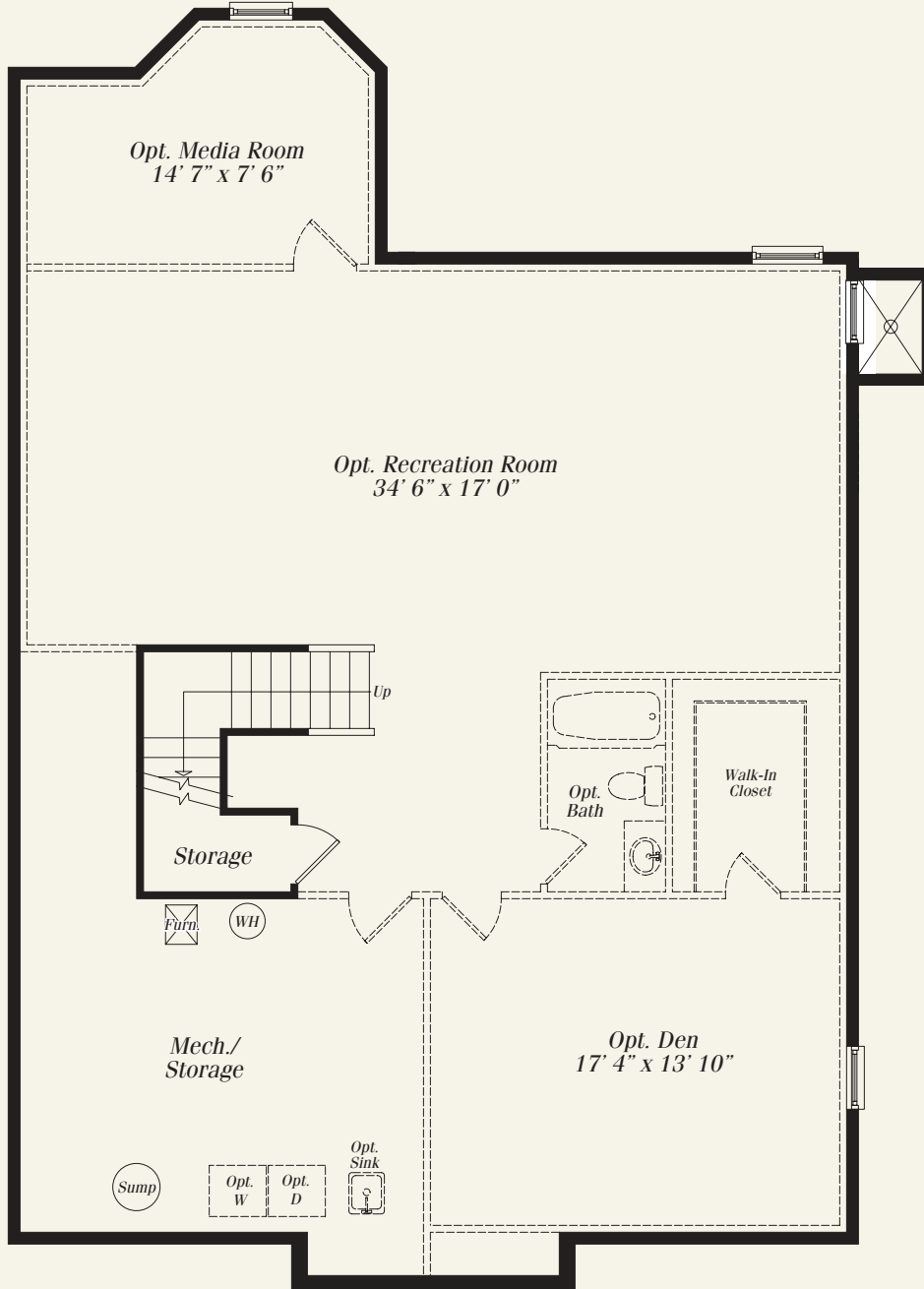
# THE SAGAMORE

## UPPER LEVEL



# THE SAGAMORE

## LOWER LEVEL



## CHESTNUT LODGE



Equal Housing Opportunity  
MHBR # 3552

All sizes and dimensions are approximate. Features, materials, dimensions and designs are subject to errors, omissions and change without notice. Floorplans and elevations are an artist's conception which may show optional features and are not part of any sales contract. 1/2011