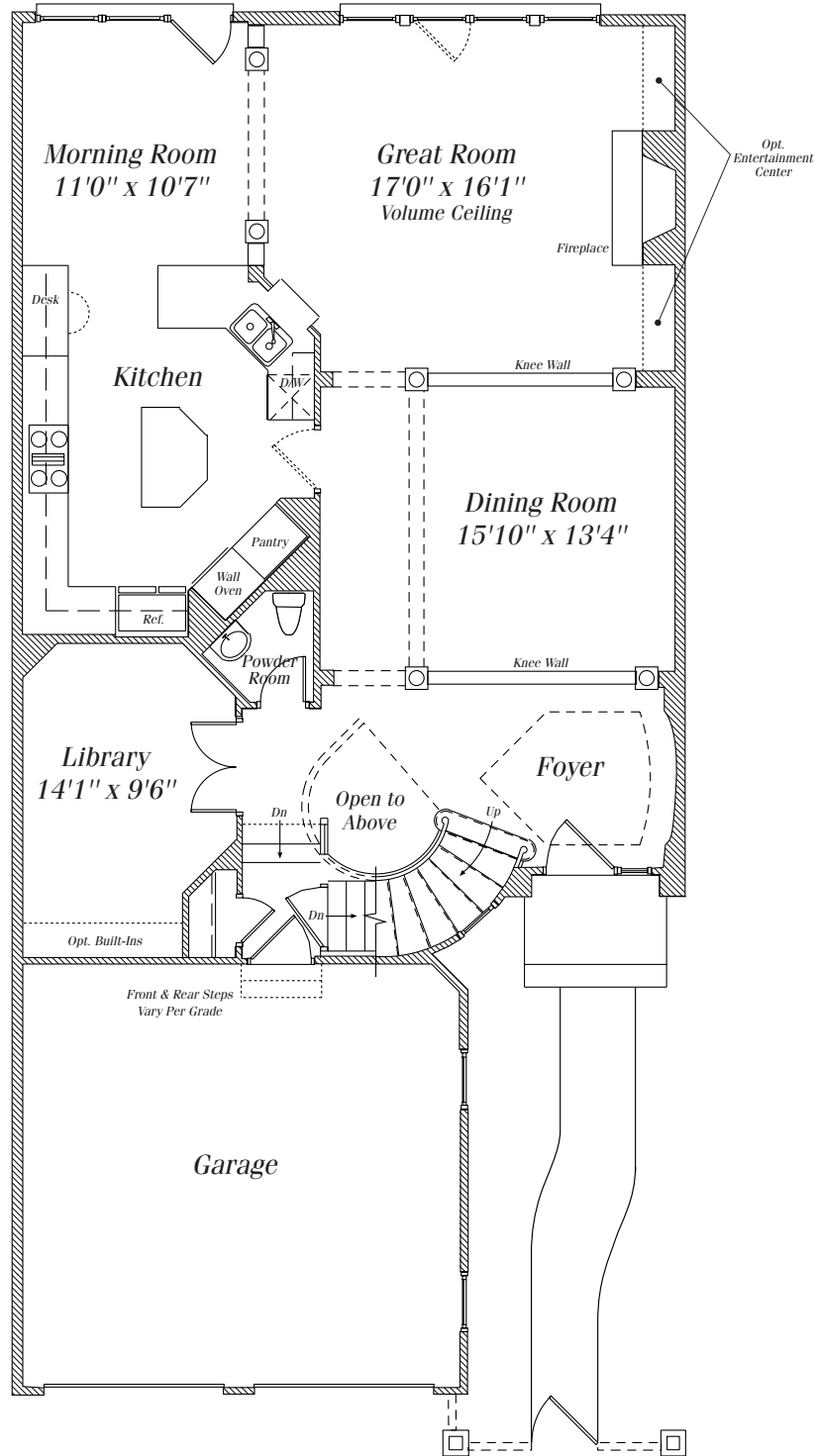


The Turnberry



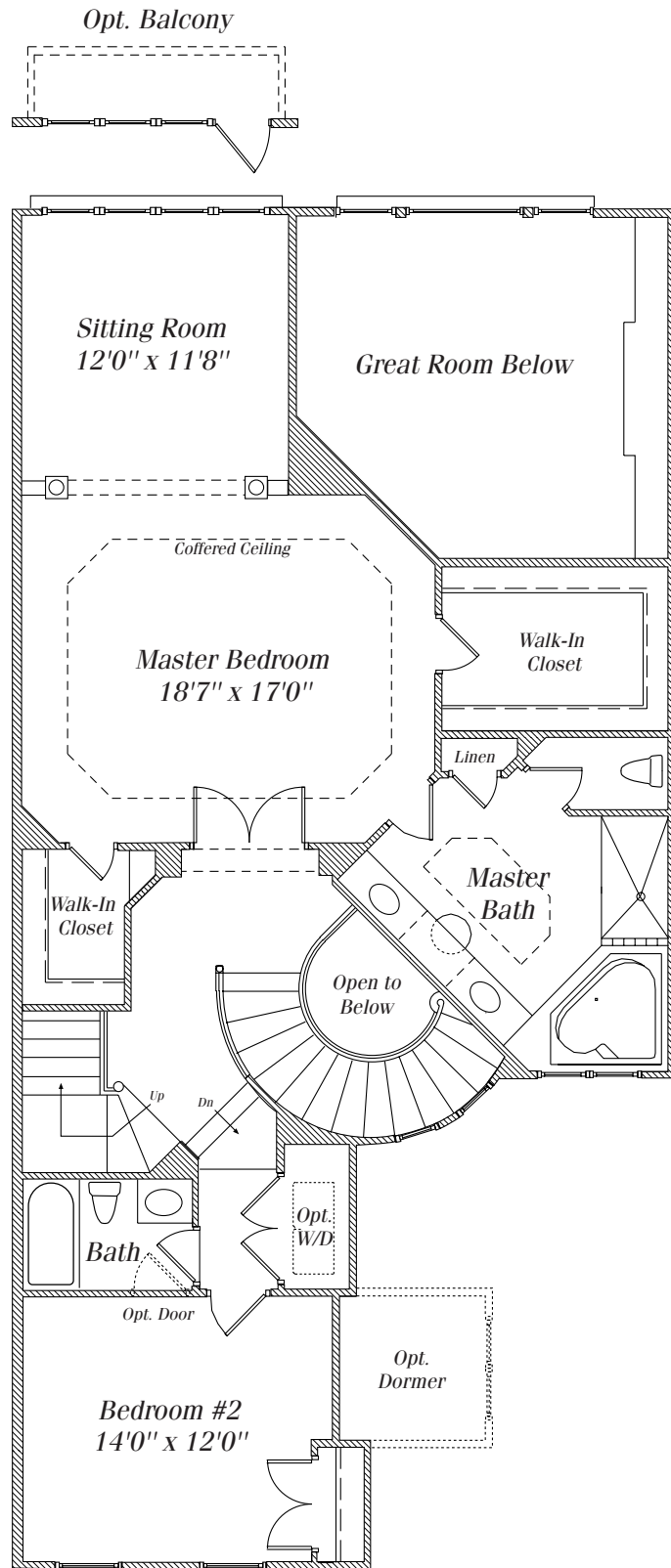
Richardsonian architectural influences, accents and themes can be found throughout The Turnberry, with its robust exterior style and dynamic interior space. This all-new design lives like a single family home, with a grand foyer leading to a semi-circular staircase open to above and a large private library. The kitchen opens onto a formal dining room featuring a beautifully arched bay window. The great room has an impressive volume ceiling and dramatic two-story arched windows. The master bedroom is sumptuously private and includes a separate sitting room, room-sized "his & hers" walk-in closets, and a master bath that is a paragon of elegance.

Patio or Deck



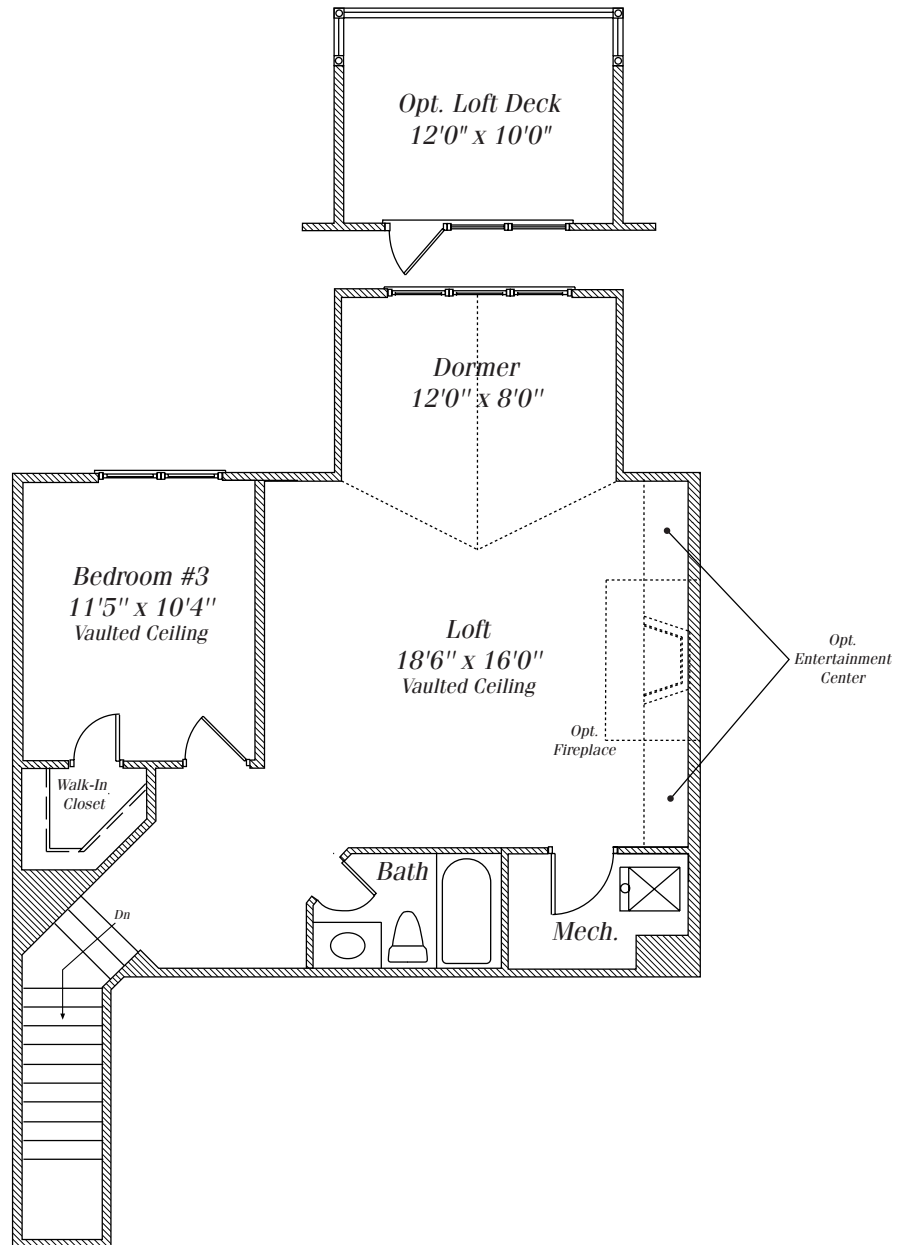
Main Level

All sizes and dimensions are approximate. Features, materials, dimensions and designs are subject to errors, omissions and change without notice. Floorplans and elevations are an artist's conception which may show optional features and are not part of any sales contract.



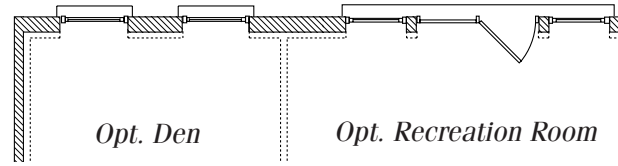
Second Level

All sizes and dimensions are approximate. Features, materials, dimensions and designs are subject to errors, omissions and change without notice. Floorplans and elevations are an artist's conception which may show optional features and are not part of any sales contract.

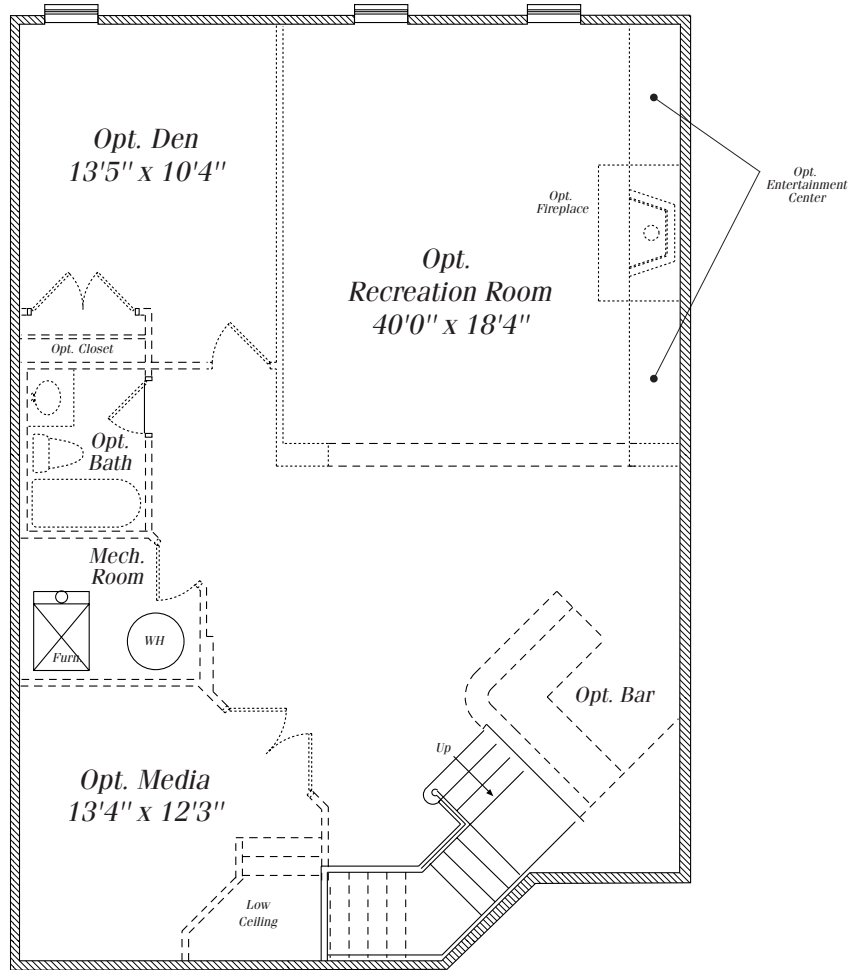


Loft Plan

All sizes and dimensions are approximate. Features, materials, dimensions and designs are subject to errors, omissions and change without notice. Floorplans and elevations are an artist's conception which may show optional features and are not part of any sales contract.



Walk-Out Basement



Lower Level

All sizes and dimensions are approximate. Features, materials, dimensions and designs are subject to errors, omissions and change without notice. Floorplans and elevations are an artist's conception which may show optional features and are not part of any sales contract.